

# **Exploration Using Ground Magnetic Method**

**Exploration, Construction and Geological Subsurface**

Minerals Investigation  
Feb, 2018

# Introduction

---

- Gold potential has been recognized in an exploration area centre of Kalimantan.
- Seisxplore Geosurvey has the equipment and capability to carry out a ground magnetometer survey & geological mapping program to interpret the geological structure of the project area and indicate targets for further gold & mineral exploration

# Equipments and Acquisition

Survey consists of a base station and a roving magnetometer to do acquire the data  
We have some equipments such :

- Geometric G-856
- GEM System GEM-19T
- PMG-1

Base



Data Acquisition/Rover





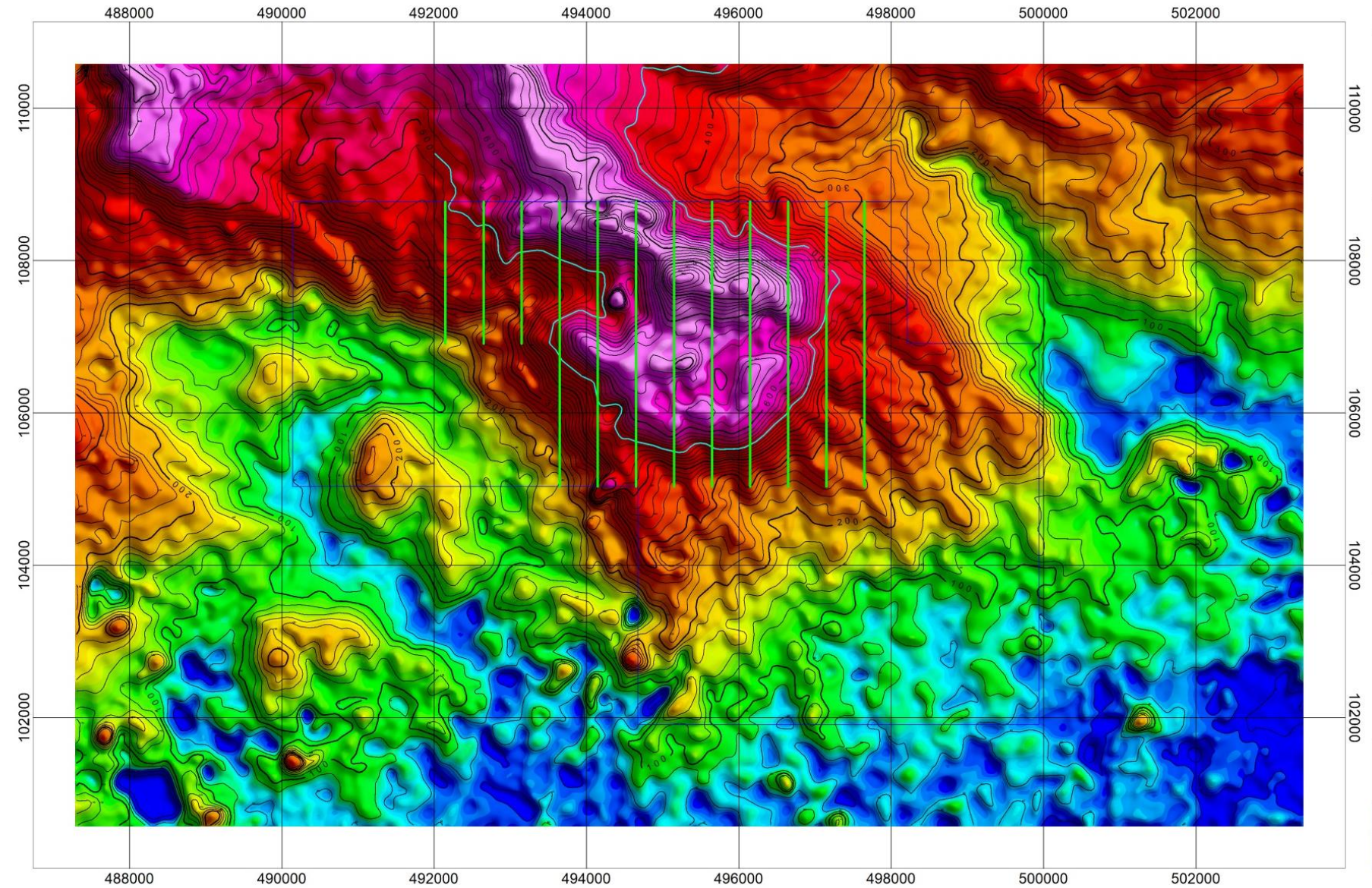
# Magnetometer

- The ground proton magnetometer is used to detect variations in the earth's magnetic field as a result of the underlying geology
- This can help interpret the geological structure of the geology beneath the surface





# Geological Structures Delineation from DEM data



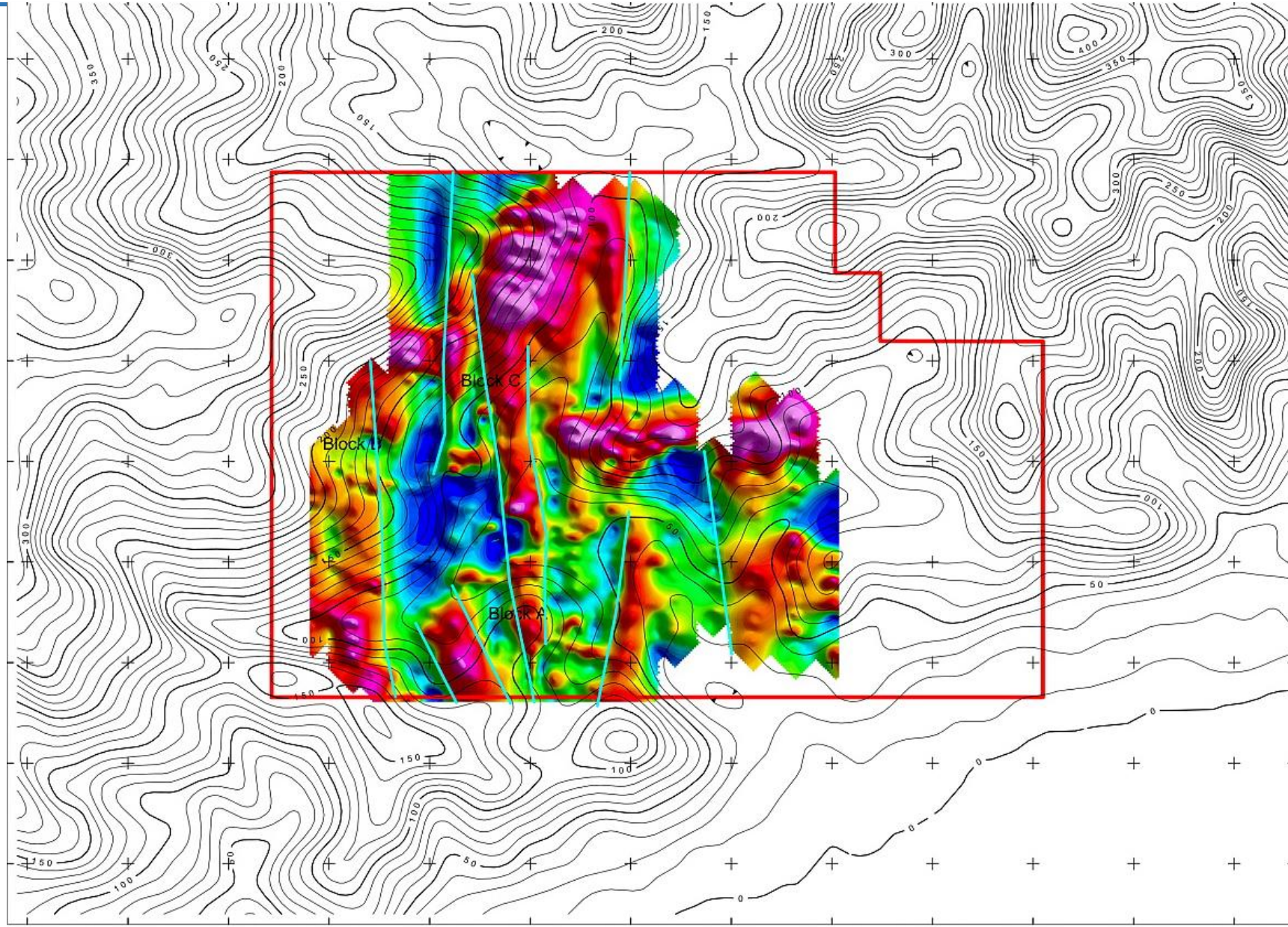


**While the mag survey is carried out geological mapping will also be carried out to identify and record the rock types & geological structure in the area**





# Interpretation & Delineation of Structures





The map displays a topographic representation of the study area with contour lines indicating elevation. The terrain is characterized by several peaks and valleys, with elevations ranging from approximately 50 to 250 meters. A red rectangular boundary outlines the study area, which covers a significant portion of the map. Various sampling points are marked with colored squares and labeled with codes such as A001, A002, A003, A004, A005, A006, A007, A008, A009, A010, A011, A012, A013, A014, A015, A016, A017, A018, A019, A020, A021, A022, A023, A024, A025, A026, A027, A028, A029, A030, A031, A032, A033, A034, A035, A036, A037, A038, A039, A040, A041, A042, A043, A044, A045, A046, A047, A048, A049, A050, A051, A052, A053, A054, A055, A056, A057, A058, A059, A060, A061, A062, A063, A064, A065, A066, A067, A068, A069, A070, A071, A072, A073, A074, A075, A076, A077, A078, A079, A080, A081, A082, A083, A084, A085, A086, and A087. The map also shows a network of roads and a river system. The background is color-coded to represent different elevation zones: green for lower elevations (below 100m), yellow for intermediate elevations (100-150m), and brown for higher elevations (above 150m).

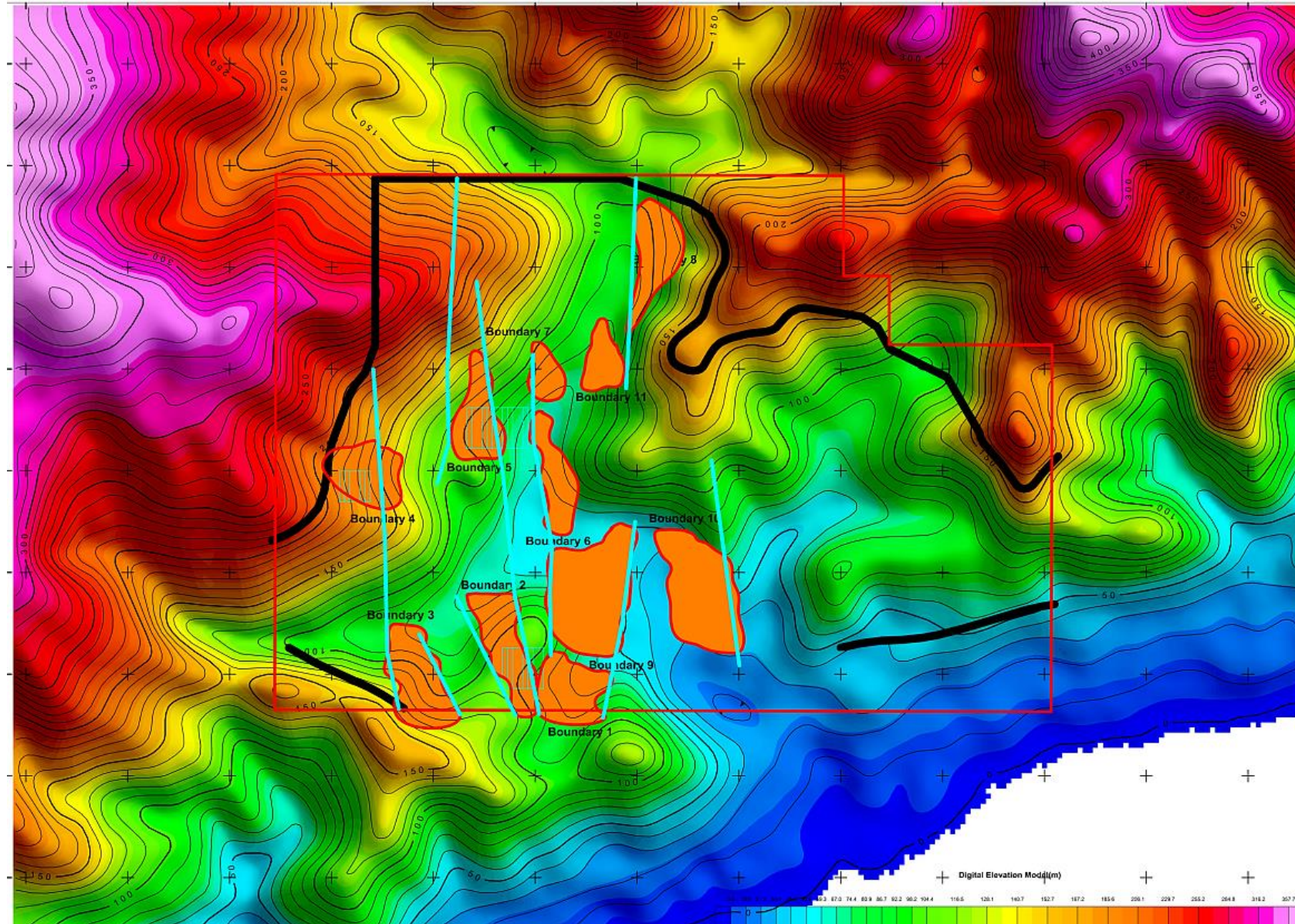
Explore Geosurvey#seisxplore-survey.com#



The figure is a topographic map of a study area, likely a mountainous region. The map features contour lines indicating elevation, with labels such as 100, 125, 150, 175, 200, 225, 250, 275, 300, 325, 350, 375, 400, 425, 450, 475, 500, 525, 550, 575, 600, 625, 650, 675, 700, 725, 750, 775, 800, 825, 850, 875, 900, 925, 950, 975, 1000, 1025, 1050, 1075, 1100, 1125, 1150, 1175, 1200, 1225, 1250, 1275, 1300, 1325, 1350, 1375, 1400, 1425, 1450, 1475, 1500, 1525, 1550, 1575, 1600, 1625, 1650, 1675, 1700, 1725, 1750, 1775, 1800, 1825, 1850, 1875, 1900, 1925, 1950, 1975, 2000, 2025, 2050, 2075, 2100, 2125, 2150, 2175, 2200, 2225, 2250, 2275, 2300, 2325, 2350, 2375, 2400, 2425, 2450, 2475, 2500, 2525, 2550, 2575, 2600, 2625, 2650, 2675, 2700, 2725, 2750, 2775, 2800, 2825, 2850, 2875, 2900, 2925, 2950, 2975, 3000, 3025, 3050, 3075, 3100, 3125, 3150, 3175, 3200, 3225, 3250, 3275, 3300, 3325, 3350, 3375, 3400, 3425, 3450, 3475, 3500, 3525, 3550, 3575, 3600, 3625, 3650, 3675, 3700, 3725, 3750, 3775, 3800, 3825, 3850, 3875, 3900, 3925, 3950, 3975, 4000, 4025, 4050, 4075, 4100, 4125, 4150, 4175, 4200, 4225, 4250, 4275, 4300, 4325, 4350, 4375, 4400, 4425, 4450, 4475, 4500, 4525, 4550, 4575, 4600, 4625, 4650, 4675, 4700, 4725, 4750, 4775, 4800, 4825, 4850, 4875, 4900, 4925, 4950, 4975, 5000, 5025, 5050, 5075, 5100, 5125, 5150, 5175, 5200, 5225, 5250, 5275, 5300, 5325, 5350, 5375, 5400, 5425, 5450, 5475, 5500, 5525, 5550, 5575, 5600, 5625, 5650, 5675, 5700, 5725, 5750, 5775, 5800, 5825, 5850, 5875, 5900, 5925, 5950, 5975, 6000, 6025, 6050, 6075, 6100, 6125, 6150, 6175, 6200, 6225, 6250, 6275, 6300, 6325, 6350, 6375, 6400, 6425, 6450, 6475, 6500, 6525, 6550, 6575, 6600, 6625, 6650, 6675, 6700, 6725, 6750, 6775, 6800, 6825, 6850, 6875, 6900, 6925, 6950, 6975, 7000, 7025, 7050, 7075, 7100, 7125, 7150, 7175, 7200, 7225, 7250, 7275, 7300, 7325, 7350, 7375, 7400, 7425, 7450, 7475, 7500, 7525, 7550, 7575, 7600, 7625, 7650, 7675, 7700, 7725, 7750, 7775, 7800, 7825, 7850, 7875, 7900, 7925, 7950, 7975, 8000, 8025, 8050, 8075, 8100, 8125, 8150, 8175, 8200, 8225, 8250, 8275, 8300, 8325, 8350, 8375, 8400, 8425, 8450, 8475, 8500, 8525, 8550, 8575, 8600, 8625, 8650, 8675, 8700, 8725, 8750, 8775, 8800, 8825, 8850, 8875, 8900, 8925, 8950, 8975, 9000, 9025, 9050, 9075, 9100, 9125, 9150, 9175, 9200, 9225, 9250, 9275, 9300, 9325, 9350, 9375, 9400, 9425, 9450, 9475, 9500, 9525, 9550, 9575, 9600, 9625, 9650, 9675, 9700, 9725, 9750, 9775, 9800, 9825, 9850, 9875, 9900, 9925, 9950, 9975, 10000. The map includes a red boundary line and a yellow shaded area in the bottom right corner. Sampling points are marked with letters and numbers (e.g., A001, A002, A003, A004, A005, A006, A007, A008, A009, A010, A011, A012, A013, A014, A015, A016, A017, A018, A019, A020, A021, A022, A023, A024, A025, A026, A027, A028, A029, A030, A031, A032, A033, A034, A035, A036, A037, A038, A039, A040, A041, A042, A043, A044, A045, A046, A047, A048, A049, A050, A051, A052, A053, A054, A055, A056, A057, A058, A059, A060, A061, A062, A063, A064, A065, A066, A067, A068, A069, A070). Sampling stations are marked with letters and numbers (e.g., ST1, ST2, ST3, ST4, ST5). The map also shows contour lines and a red boundary line.

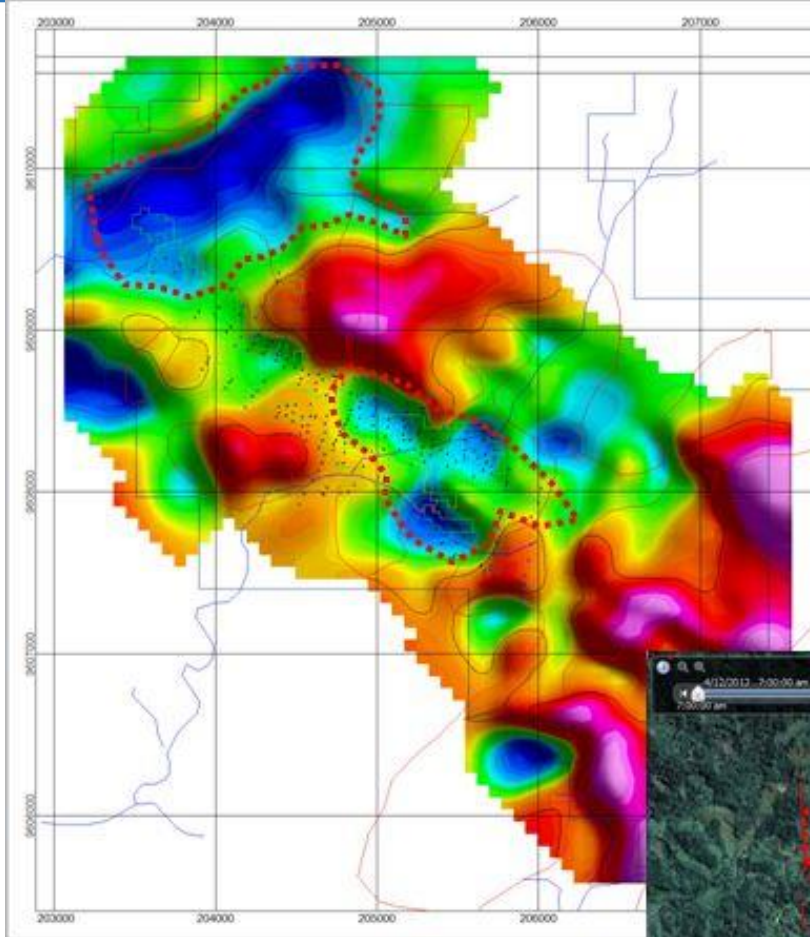


# Exploration Target



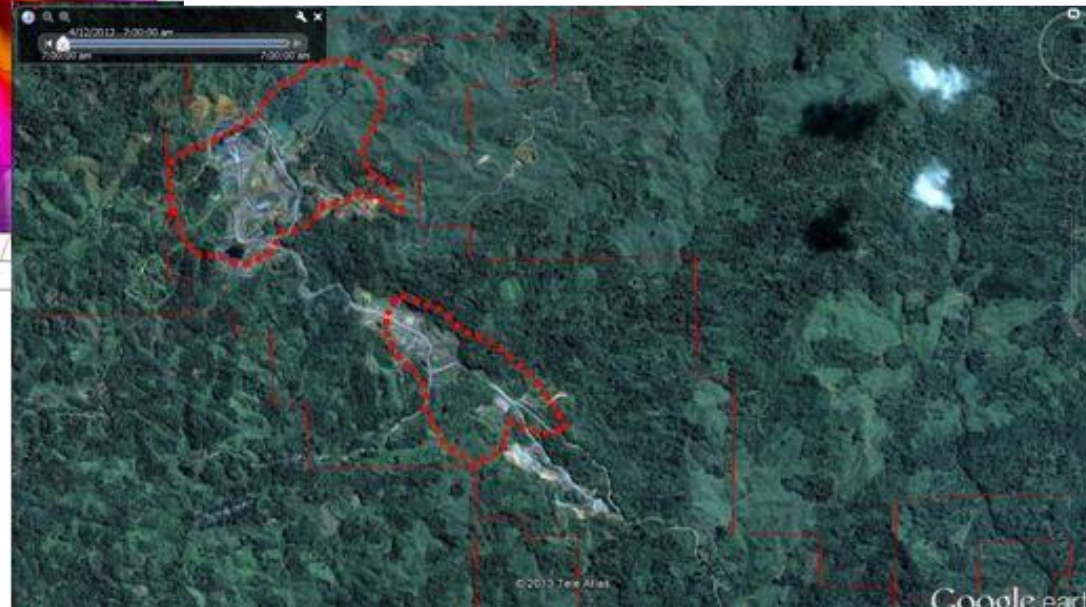


# Sediment Boundries and Delineate of Coal Distribution

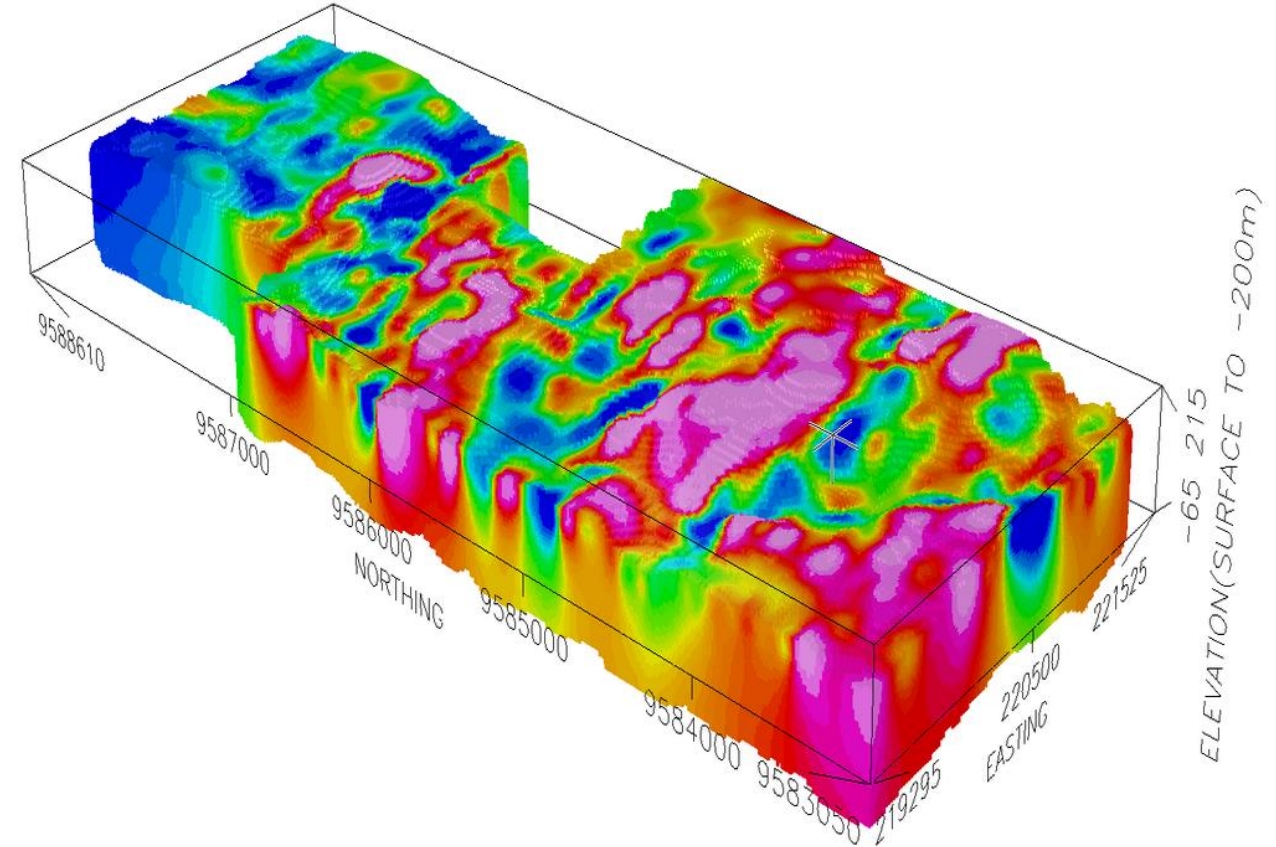
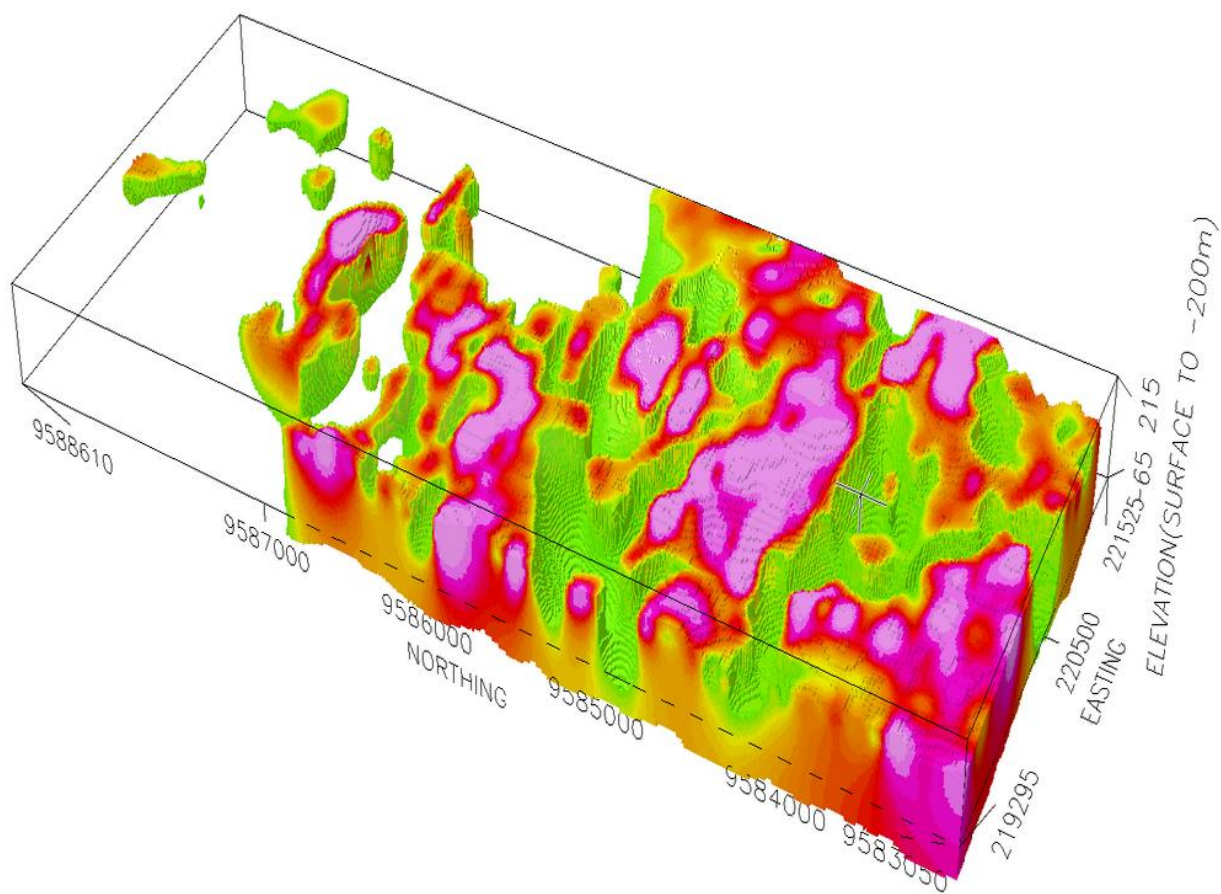


Red areas show high magnetic response (Volcanic Material)

Blue areas show low magnetic response (Sediments)

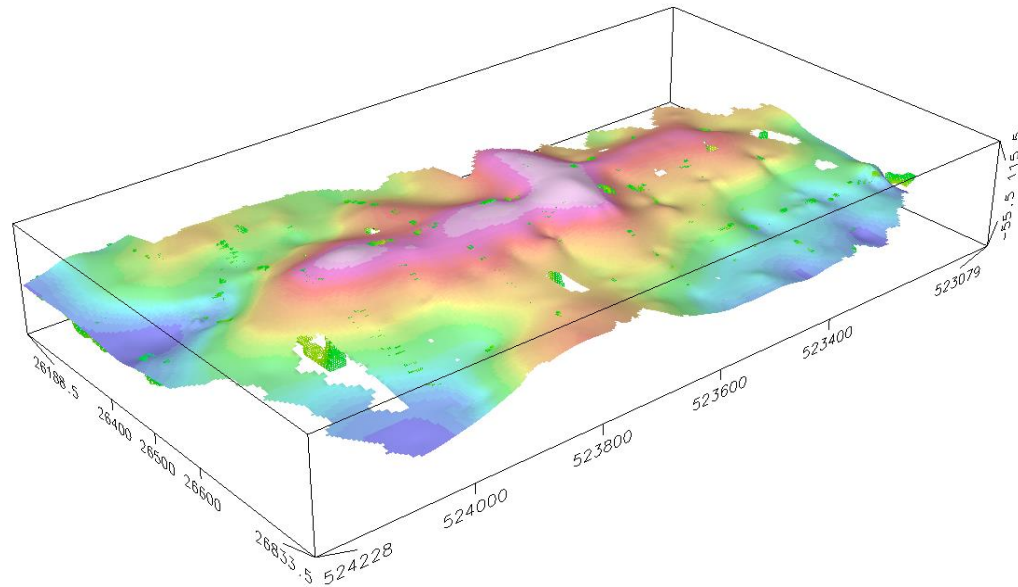
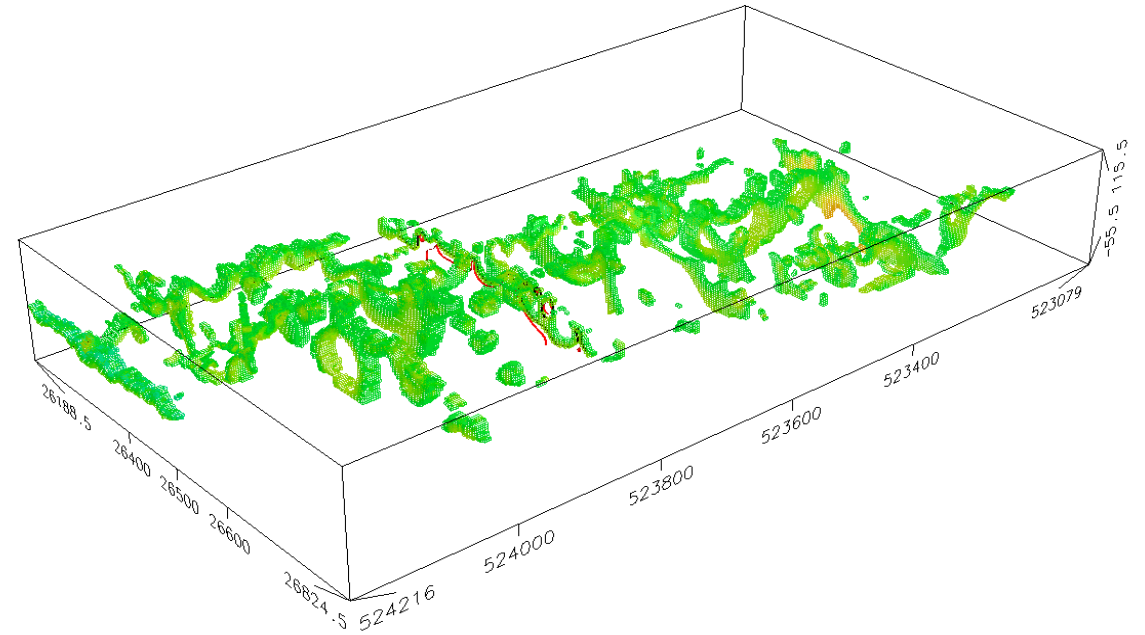
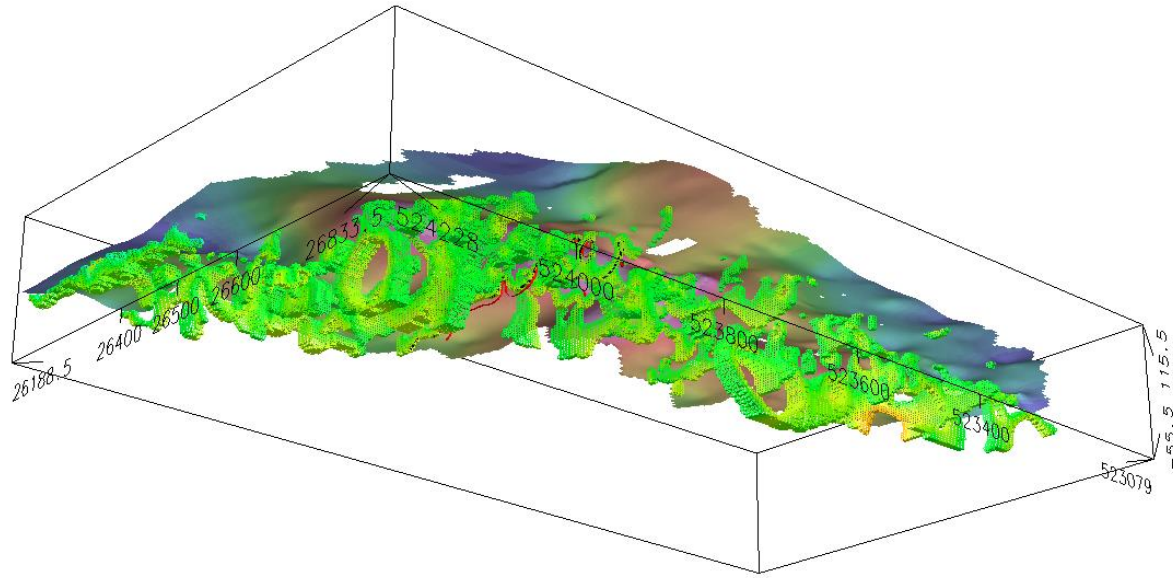


# Distribution of Target in 3-D Surface/Solid Model

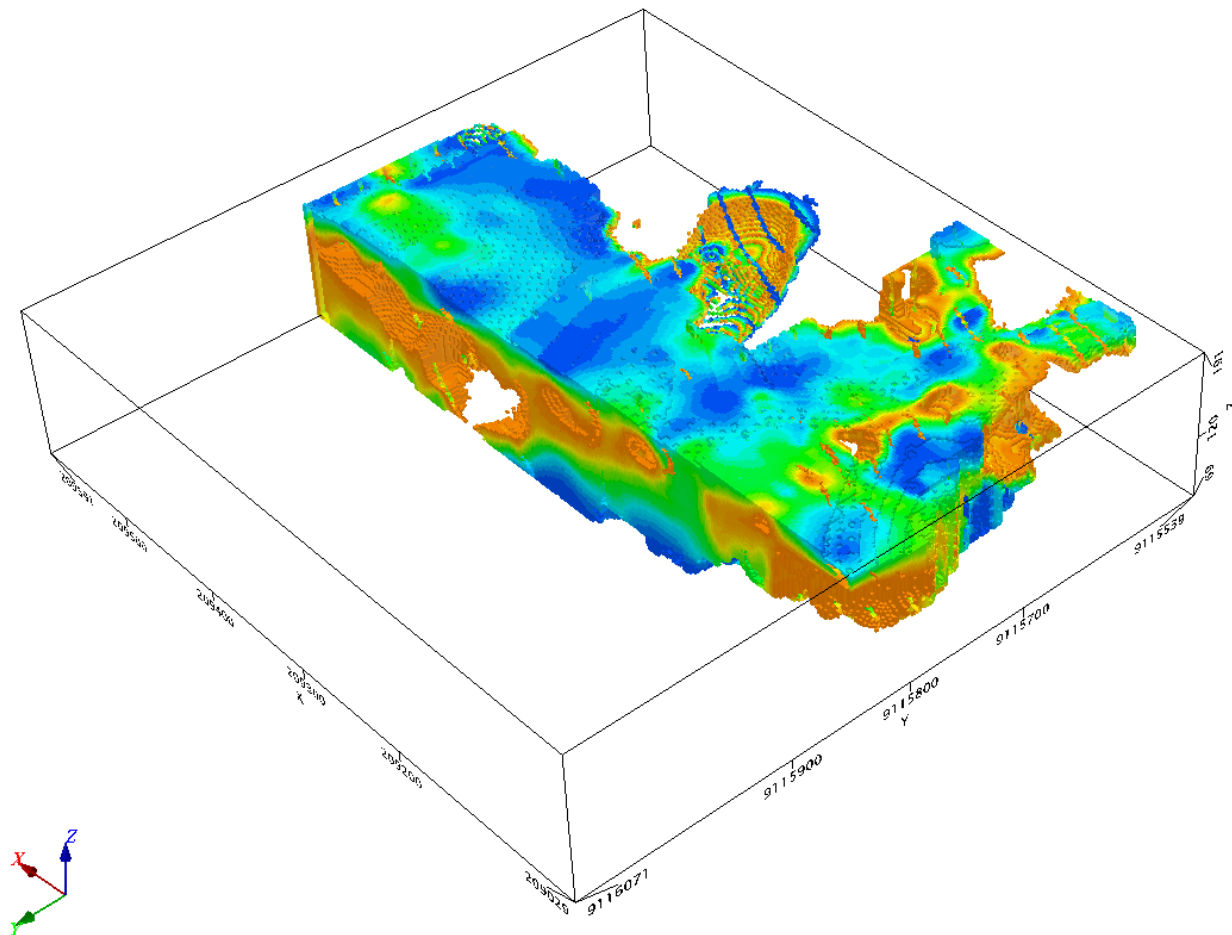
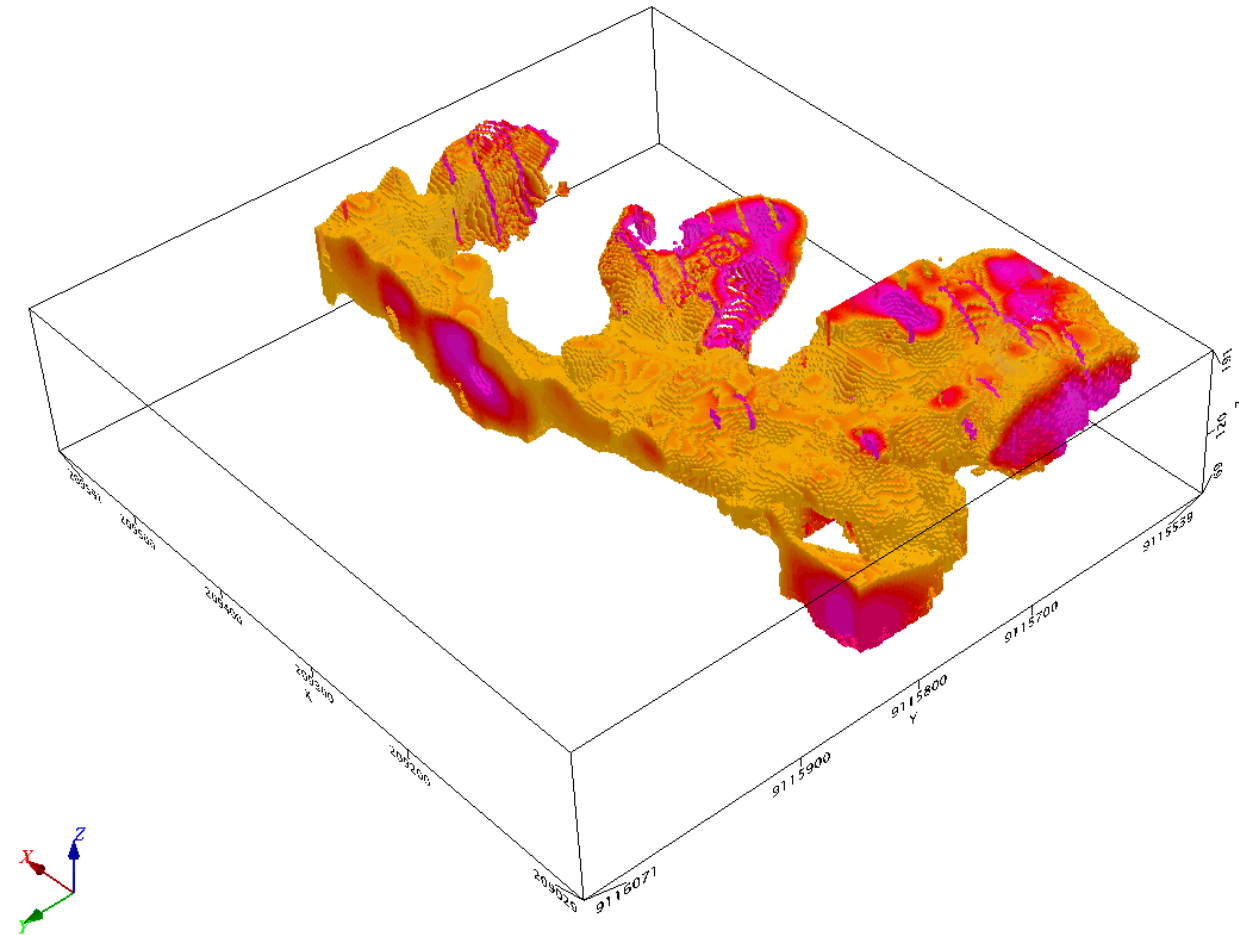




# Volumetric of Target(Andhesit/Ore/Mineralization)



# Volumetric of Target(Andhesit/Ore/Mineralization)





# Receivables

---

- A power point presentation containing;
- a) a magnetic anomaly map
- b) a surface geology map
- c) a combined geology and magnetic map
- d) a 3-D view distribution of the target
- d) a structural interpretation of the project area with target areas for further investigation